

Energy Storage System (ESS) for commercial and industrial applications -

STORION SERIES T50/T100



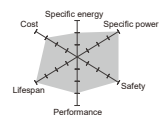
✓ Key Features

-  **UPS ability**
-  **Off-grid ability**
-  **Modular design**
-  **Easy installation and low maintenance**
-  **24/7 Monitoring with local interface**



Real-time Monitoring

All systems can be monitored by **Web and iOS/Android APP.**

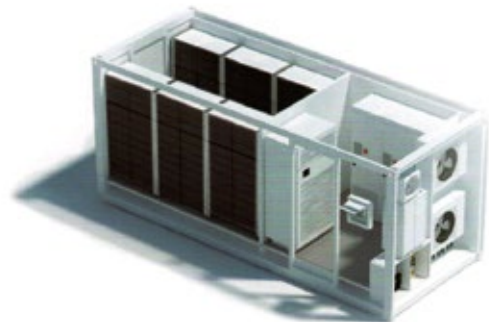


Safest Chemistry

AlphaESS uses Li-phosphate for its excellent safety and long lifespan.



We specialize in integrated outdoor proof container solutions and with different demands we can provide diverse solutions. We can equip a 10'GP container with up to 206 kWh energy storage capacity and for a 20'GP container the capacity can be increased to 618 kWh. For more detailed information please contact an AlphaESS sales representative or a technician.



About AlphaESS

As one of the earliest pioneers in energy storage market with lithium iron technology, AlphaESS has a vision to pave the path for everyone in the world to enjoy clean energy one day.

AlphaESS is a multinational company that currently has more than 10'000 residential and commercial systems running in 30 countries globally and its products are accredited by IEC, TÜV, CEC and many other international standards.

All AlphaESS energy systems are integrated with smart energy management solutions. AlphaESS is committed to revolutionize the future energy network through our patented German technologies.



immersa
www.immersa.co.uk

System Specification

Model	Storion-T50	Storion-T100
Nominal Output Power	50 kW	100 kW
Max. PV Input Power	110 kW	220 kW
Capacity Range	28.7 kWh ~ 1032.2 kWh (90% DoD)	
Battery Chemistry	LFP (LiFePO4)	
IP Protection	IP21/IP65 (in Container)	
Warranty	3 Year Product Warranty, 10 Year Performance Warranty	

Inverter Technical Specification

Max. PV Input Current	110 A	220 A	Phase	Three-Phase
PV Input Voltage Range	520 V ~ 900 V		Off-grid Voltage Range	360 V ~ 440 V
MPPT Number	1		Rated Frequency	50/60 Hz
Battery Voltage Range	250 V ~ 520V		Backup	UPS (With STS Module)
Max. Charge/Discharge Current	150 A	300 A	Dimension (W x D x H)	800 mm x 800 mm x 2160 mm
Max. Charge/Discharge Power	50 kW	100 kW	Weight	520 kg 750 kg
Rated Voltage	400 V		Grid Regulation	AS 4777.2/3
Grid Voltage Range	340 V ~ 460 V		Safety	IEC 62109-1&-2

Battery Technical Specification

Module Model	M48112-S	Module Capacity	5.7 kWh
Module Weight	65 kg	Module Nominal Voltage	51.2 V
Module Dimension (W x D x H)	450 mm x 580 mm x 165 mm	Cycle Life	≥ 6000
Max. Charge/Discharge Current	112 A (1C)	Operating Temperature Range	-10 °C ~ 50 °C*

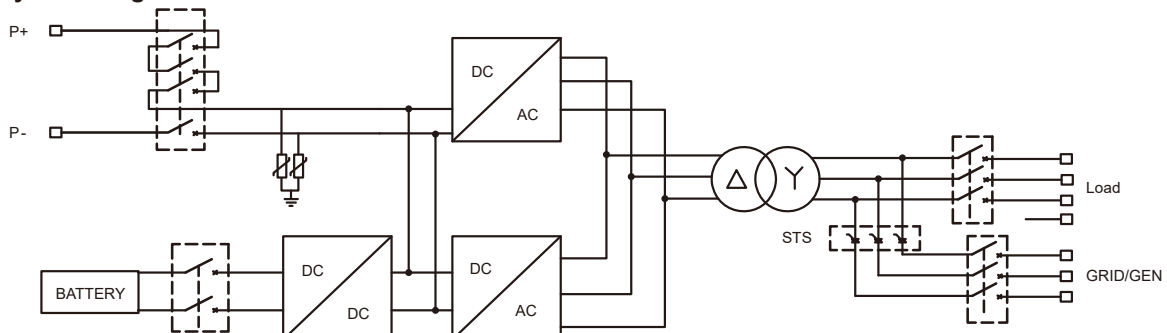
High Voltage Control Box Technical Specification

BMU Model	HV900112 (TOP BMU required with more than one cluster)
DC Voltage Range	200 V ~ 900 V
Nominal Output Current	112 A
Battery Modules Connection	5 ~ 9 M48112-S in series in one cluster
Clusters Connection	Max. 20 clusters in parallel

*When the temperature is below 0 °C or above 40 °C, the performance will be limited.



T50/T100 System Diagram



For further information and order enquiries contact us below

Immersa
Suite 4F, Drake House, Long Street, Dursley GL11 4HH

T 44 (0)1453 545222 | E info@immersa.co.uk



immersa
www.immersa.co.uk